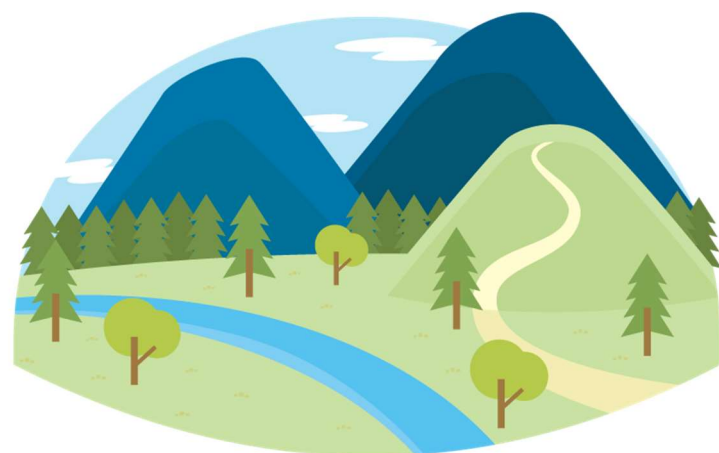


Cycling Guide of Bizen city



Issued by: Bizen Tourism Association

2021/02

About Bizen city

Bizen city is surrounded with beautiful nature, it has warm climate and less natural disasters. Oyster farming is prosperous, there are 2 seafood markets attract many tourists visiting. Here you can also find the wonderful landscape of Setonaikai National Park, and have some cultural experiences, like traditional pottery Bizen ware, and visit Former Shizutani School which is designated as Japan Heritage.

Recommended route (by electronic bicycle)

9 : 00 Bizen Tourism Association (Hinase office)
- Bicycle rental



10:30 Hinase islands
- Cycling to Kashirajima island



11:00 Lunch at Hinase



13:00 Cycling to Inbe area (roughly 1hour)

↓ (On the way, you may visit Gominoichi fish market, Manaichi fish market, Usahachimangu Shrine, etc)

14:00 Explore the town of Bizen ware Inbe and experience making Bizen ware



17:00 Return bicycle at Bizen Tourism Association (Inbe office)

Rental Bicycle

【Reception】 Bizen Tourism Association
・Inbe office: Beside JR Inbe station(Ako line)
・Hinase office: Beside JR Hinase station(Ako line), 1F of Bldg. Sunbas(サンバース)

【Rental time】 9 : 00~17 : 00

【Rental fee】

・Electronic type : 1,000 yen
・Normal type : 500 円 yen

※ It's possible to drop off at Inbe office or Hinase office

Please inform the staff if you plan to return bicycle at the different place.

【Contact】

TEL : 0869-72-1919
(Bizen Tourism Association Hinase office)



Bizen Tourism Association

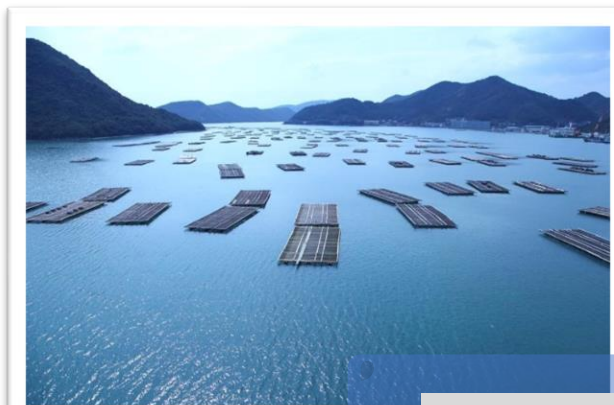
2570-31 Sogo Hinase, Bizen city, Okayama

TEL : 0869-72-1919

FAX : 0869-72-0066

E-Mail : kankoinfo@bizen-kanko.com

Let's enjoy Bizen by bicycle



日生(Hinase)

Setonaikai National Park has peaceful inland sea and lots of islands. Also you can have delicious seafood and fruits here. Come to explore this lovely and energetic fishing town.

Bizen ware, one of the six ancient kiln sites, which has been produced for over 1000 years.
Enjoy walking and shopping in the old town Inbe.
Special historic spot Former Shizutani School is designated as Japan Heritage.
Experience Japanese traditional culture from both above.

Try to make your own Bizen ware
(※reservation needed)



Bizen Yaki Dentou Sangyo Kaikan
Tel:0869-64-1001
Closed on Tuesday.
On the 3rd Floor, you can try making Bizen Pottery.
(Only on Saturday, Sunday, and national holidays)

about 12km

about 1 hour



Oyster Okonomiyaki

Street view of Inbe



伊部(Inbe)



Tangerine picking
(Middle October~Early December)



about 13km

about 1 hour



Shizutani illumination
(Around November)



about 10km

about 50 min

【Entry fee of Former Shizutani School】

Adult: 400 yen
Elementary and junior high school students: 100 yen
65 ages and above: 200 yen
(※free with disability certificate)

Group discount (over 30 people)
Adult: 320 yen
Elementary and junior high school students: 80 yen
【 TEL:0869-67-1436 】



旧閑谷学校(Former Shizutani School)